

SPECIFICATIONS

Mechanical

Contact Retention Force: 1.02Kg(2.3Lb)min.
Durability: 250 Cycles

Electrical

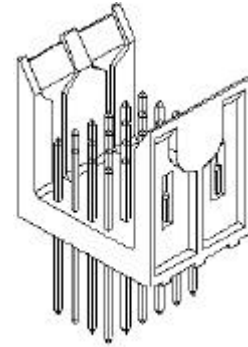
Voltage Rating: 750V
Current Rating: 1A
Contact Resistance: 10mW max.
Dielectrical Withstanding Voltage: 1000V
Insulation Resistance: 1000MW min.

Physical

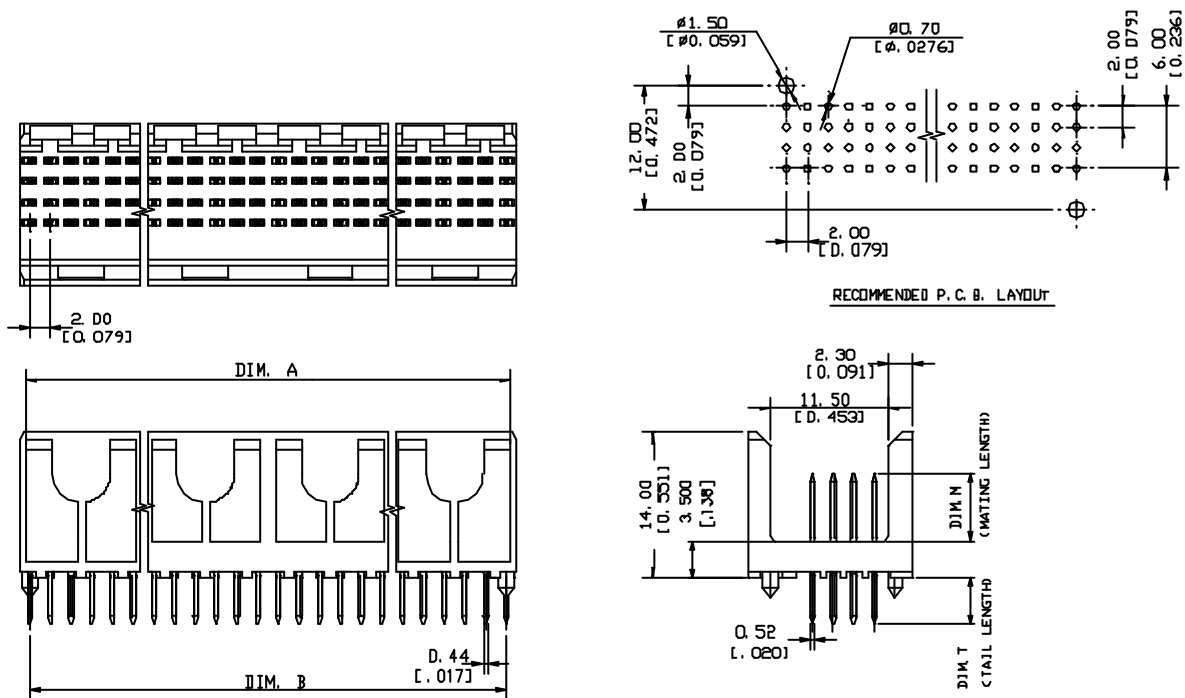
Housing: LCP, UL 94-0, Ivory White
Contact: Phosphor Bronze
Plating: See "ORDERING INFORMATION"

FUTURE BUS CONNECTOR

**1F Series,
 Plug. Solder Fit Type
 2.0mm [.078"] Pitch
 4Rows, Short Body**



DRAWING



ORDERING INFORMATION

PRODUCT NO.: 1F11***5-S**7

Mating Area plating:

5=45u" Gold

TAIL LENGTH(T)

- 1=2.9mm
- 2=3.7mm
- 3=4.5mm
- 4=2.65mm
- 5=3.45mm
- 6=4.25mm

MATING LENGTH(M)

- 1=5.00mm
- 2=5.75mm
- 3=6.50mm
- 4=7.25mm
- 5=8.00mm

1F110245-S537	24	11.90	10.00
		[.469]	[.3937]
1F110485-S537	48	23.90	22.00
		[.941]	[.866]
1F110965-S537	96	47.90	46.00
		[1.866]	[1.811]
1F111925-S537	192	95.90	94.00
		[3.776]	[3.70]
P/N	POS.	DIM. A	DIM. B